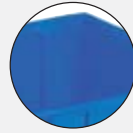




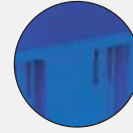
# Nest & Stack Totes

totes, containers & small parts storage

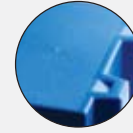
## features



Smooth surfaces are easy to clean



Comfortable grip makes handling easy



Textured bottoms provide a no-slip grip on conveyor belts



Ribs under the lip will prevent jamming when nested



- Extremely durable industrial-grade totes
- Ideal for shipping, transfer and storage applications
- NSTs stack with or without lids for storage and shipping, nest when empty
- Strong, high impact polypropylene will not rust, corrode, or bend out of shape even when fully loaded
- Heavy-duty construction provided a longer service life resulting in lower replacement costs than other "budget-priced" totes
- Easy to clean, smooth surfaces are resistant to most solvents and chemicals
- NSTs are manufactured from FDA-sanctioned materials
- Optional lids protect contents from dust and damage
- Available in 9 sizes and 3 colors: Red, Blue and Gray

## related products

Add mobility to your Nest & Stack Totes with:

- Carts ..... pg. 37
- Dollies..... pgs. 44-45



- Dollies**
- Available to transport containers – see pgs. 44-45

## accessories



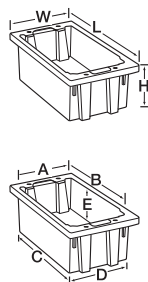
**Clear Plastic Label Holders** attach easily to NSTs, with or without the lid in place. Holders accommodate labels up to 3¾" x 5"



**Lids snap tight** to protect contents. See lids chart for matching lid size below

### Label Holders

Model No.	Pkg. Qty.	Label Size (In.)
35010	6	3¾ x 5
35011	6	3 x 5



Nest & Stack Totes (NSTs)	Outside Dimensions						Inside Dimensions									NST Ctn. Qty.	Cu. Ft.	Lid Model	Ctn. Qty.
	Inches			mm			Inches			mm									
Model No.	L	W	H	L	W	H	A	B	C	D	E	A	B	C	D	E			
35180	18	11	6	457	280	152	10	16	15¼	9%	5%	254	406	387	238	149			
35185	18	11	9	457	280	229	10	16	15¼	9%	8%	254	406	384	232	225			
35190	19½	15½	10	495	394	254	14½	17	16	13¼	9%	368	432	406	337	251			
35195	19½	15½	13	495	394	330	14½	17	15%	13%	12%	368	432	403	340	327			
35200	19½	13½	8	495	343	203	12%	17%	16%	11½	7%	314	454	416	292	200			
35225	23½	19½	10	597	495	254	18¼	20%	19%	16%	9%	464	530	492	429	251			
35230	23½	19½	13	597	495	330	18¼	20%	19½	16%	12%	460	530	495	429	327			
35240*	23½	15½	12	597	394	305	14¼	20%	19%	13	11%	362	530	498	330	302			
35300*	29½	19½	15	750	495	381	18¼	26%	25%	16%	14%	464	676	638	422	378			

One color per carton. Specify color: Red, Blue, or Gray. Order in carton quantities. \*Made of HDPE polyethylene.



# Akro-Grids

totes, containers & small parts storage

- Versatile work-in-process transfer containers
- Dividers allow subdivision of the containers down to a 1 1/8" square compartment size
- Injection molded from polypropylene block copolymer
- Resists most solvents and chemicals
- Compatible with most racks, shelving and automated material handling equipment
- Dividers, lids, and label holders sold separately
- Available in 8 sizes and 3 colors: Red, Blue and Gray

## features



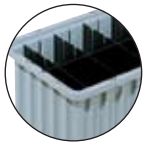
Dividers allow you to create hundreds of different compartment sizes



Strong stacking rims and external ribbing provide added strength



## accessories



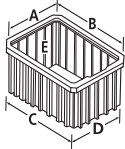
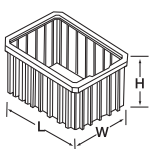
**Dividers** allow sub-division of the containers down to a 1 1/8" square compartment size. Color: Black



**Clear Plastic Label Holders** snap securely on any side of the container



**Clear Plastic Covers** keep contents clean yet visible. Molded corner guides provide secure stacking



Akro-Grids Model No.	Outside Dimensions			Inside Dimensions					Capacity													
	Inches		mm	Inches		mm			Ctn. Qty.		Cu. Ft. Lbs.		Long Divider*	Short Divider*	Pkg. Qty.							
33105	10 7/8	8 1/4	5	276	210	127	6 1/16	9 5/16	9 3/8	6 1/2	4 3/8	170	237	232	165	117	20	.16	25	42105 (5)	41105 (7)	6
33164	16 1/2	10 7/8	4	419	276	102	9 3/8	14 1/16	14 3/16	9 3/8	3 3/8	238	380	376	233	98	12	.29	20	42164 (7)	41164 (11)	6
33166	16 1/2	10 7/8	6	419	276	153	9 3/8	14 3/8	14 3/8	9 3/8	5 3/8	237	378	375	232	141	8	.44	35	42166 (7)	41166 (11)	6
33168	16 1/2	10 7/8	8	419	276	203	9 3/8	14 3/8	14 3/8	9 3/8	7 3/8	237	380	371	230	192	6	.59	40	42168 (7)	41168 (11)	6
33220	22 3/8	17 3/8	10	568	441	254	15 1/4	20 1/8	19 7/8	14 7/8	9 3/8	387	511	505	378	251	2	1.66	50	42220 (11)	41220 (15)	6
33224	22 3/8	17 3/8	4	568	441	102	15 1/8	20 1/8	20	15	3 3/8	383	510	508	381	98	6	.61	30	42224 (11)	41224 (15)	6
33226	22 3/8	17 3/8	6	568	441	153	15 1/8	20 1/8	19 7/8	14 7/8	5 3/8	384	511	505	378	149	4	.96	40	42226 (11)	41226 (15)	6
33228	22 3/8	17 3/8	8	568	441	203	15 1/8	20 1/8	19 7/8	14 7/8	7 3/8	384	511	505	378	189	3	1.30	50	42228 (11)	41228 (15)	6

One color per carton. Specify Red, Blue, or Gray. Order in carton quantities. \*( ) = max # of dividers.

### Clear Plastic Covers

Model No.	Fits Grid No.	Ctn. Qty.
33101	33105	10
33161	33166, 33168, 33164	4
33221	33228, 33220, 33226, 33224	3

### Label Holders

Model No.	Description	Pkg. Qty.
35010	Fits all Akro-Grids except 33164 and 33224	6
35011	Fits grids No. 33164, 33224	6



### Dollies

- Available to transport containers. See pgs. 44-45



# Attached Lid Containers

totes, containers & small parts storage



- ALCs stack and nest for optimal space use
- Reusable shipping, distribution, order picking, and storage containers
- Attached lids snap securely closed to protect contents from dust or damage
- Containers interwork for easy pallet loading
- See chart below for color options



## features



Textured bottoms provide a sure grip on conveyor belts



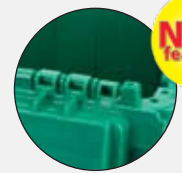
Strong molded-in handle grips are ergonomically designed for easy lifting and carrying



Padlock eye on both ends accommodates security ties



Reinforced hinge pins for years of smooth lid operation



**NEW Feature!**

Extra Secure HDPE hinges "lock" when lid closes, protecting against inventory loss and theft. Available on model AA211512 only

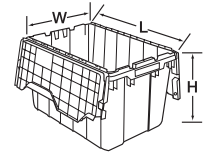
**NEW product!**

## All Plastic Attached Lid Container Ship & Store – More Secure!

- All-plastic hinges "lock" lid for greater security in shipping, storage, or picking applications
- 100% recyclable tote
- Non-steel hinge makes product lighter
- Tie holes located in both ends of lid are compatible with a variety of closures to further secure lids
- Available in Red, Blue, Green or Gray



AA211512



ALCs	Model No.	Available Colors	Outside Dimensions						Inside Dimensions Top						Inside Dimensions Bottom				Capacity				
			Inches			mm			Inches			mm			Inches		mm		Cu. Ft.	Gal.	Lbs.	Ctn. Qty.	Stack Cap./Qty. Stacked
	39085	Blue, Gray	21½	15	9	546	381	229	19¾	14½	8%	502	368	219	18¾	13¼	468	337	1.12	8.5	35	6	35 lbs./5
	39120	Blue, Gray	21½	15	12½	546	381	318	19¾	14½	12	502	368	305	18¾	13¼	468	337	1.62	12	65	6	65 lbs./5
	39160	Gray	27	17	12½	689	430	320	25	15½	11	635	394	273	23½	14	600	350	2.25	16.83	100	1	100 lbs./4
	39170	Blue, Gray	21½	15	17	546	381	432	19¾	14½	16%	502	368	429	18¾	13¼	468	337	2.28	17	100	3	100 lbs./3
	39175	Gray	24	19½	12½	610	495	320	22	18	11	559	457	273	20½	16½	520	423	2.3	17.20	80	1	80 lbs./5
	39280	Gray	28	21	15½	710	530	390	26	19	14	660	483	653	25	18	635	460	3.82	28.57	100	1	100 lbs./4
	AA211512	Blue, Green, Red, Gray	21¾	15½	12½	610	140	178	20½	14½	11¼	535	358	286	21¾	12¼	552	311	1.62	12	65	6	65 lbs./5

Order in carton quantities. Specify color when ordering.

### Attached Lid Containers

- Models 39160, 39175 and 39280 are available in gray only



### Dollies

- Plastic, steel and wood dollies available to transport containers. See pages 44-45





# Straight Wall Containers

totes, containers & small parts storage

- SWCs are reusable shipping, storage, and work-in-process containers
- Straight walls provide efficient internal and external space usage
- Solid-sided containers have smooth inner walls for easy, sanitary cleaning
- Mesh-sided containers allow hot or cold air ventilation
- Injection-molded from high-density polyethylene
- Available in 4 sizes and 3 styles
- Color: Gray



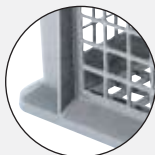
**3 Styles Per Size:**  
Solid, mesh and combinations.



## features



One-inch wall thickness for secure stacking



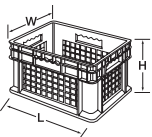
Strong, 1" wide, stacking rims and external ribbing provide added strength



Straight walls provide efficient cubing in trucks and on pallets



Open .72 x .90 mesh pattern allows high visibility and good airflow



## related products

Add more productivity to your Straight Wall Containers with:

- Carts ..... pg. 37
- Platform Trucks ..... pgs. 40-41
- Dollies ..... pgs. 44-45



### Dollies

- Plastic, steel and wood dollies available to transport containers. See pgs. 44-45

Straight Wall Containers (SWCs)			Outside Dimensions						Inside Dimensions Top						Stacking Capacity / Qty.		
Model No. Mesh Side & Base	Model No. Mesh Side/Solid Base	Model No. Solid Side & Base	Inches			mm			Inches			mm			Ctn. Qty.	Bottom Type	
			L	W	H	L	W	H	L	W	H	L	W	H		Solid	Mesh
37208	37278	37288	15¾	11¾	8¼	400	298	210	14¼	10¼	8	362	260	203	12	83 lbs./6	30 lbs./6
37608	37678	37688	23¾	15¾	8¼	603	400	210	22¼	14¼	8	565	362	203	4	83 lbs./6	45 lbs./6
37612	37672	37682	23¾	15¾	12¼	603	400	311	22¼	14¼	12	565	362	305	3	125 lbs./5	45 lbs./5
37616	37676	37686	23¾	15¾	16¾	603	400	410	22¼	14¼	16	565	362	406	2	150 lbs./4	45 lbs./4

Order in carton quantities.



# Cross-Stack Akro-Tub

totes, containers & small parts storage

- Ideal for food processing and handling operations or industrial work-in-progress activities
- Industrial-grade 90° nest and stack tub
- Nesting when empty conserves storage space
- Molded-in side handles for comfortable lifting
- Manufactured from FDA-sanctioned materials
- Smooth surface is easy to clean
- Compatible with standard 36" Shelving and conveyor systems
- Color: Gray



# Akro-Tub & Rack

- Heavy-duty, industrial-grade nesting tub
- Tub manufactured from FDA-sanctioned materials
- Smooth surface is easy to clean
- Nests when empty to conserve storage space
- Use the Akro-Tub Rack (RA6TR4MR) to provide easy loading and transport of multiple Akro-Tubs
- 75 lb. capacity per tub
- Color: Gray



## features

### cross-stack akro-tub features



Stacking grooves allow stable 90° stacks



Molded-in handles for easy lifting



Extra-thick walls and reinforcing ribs provide superior strength

## features

### akro-tub features



Rounded corner design adds strength to stress points



Rolled top rim forms comfortable handles



Extra-thick walls for superior strength



Ribs prevent jamming when nested



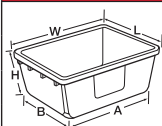
### Double-Sided Cross-Stack Tub Rack

- Holds 32 (34301) or 16 (34303) Cross-Stack Akro-Tubs\*



### Akro-Tub Rack

- Holds 6 Akro-Tubs on angle-iron slides for up to 600-lb. total capacity. Welded steel frame with 12-gauge base and bolted-on casters.\*

Cross-Stack Akro-Tub	Outside Dimensions												Capacity Gal.	Ctn. Qty.
	Model No.	Inches					mm							
	Model No.	L	W	H	A	B	L	W	H	A	B			
	34301	17¼	11	8	13¼	7¾	438	279	203	337	196	3.85	6	
	34302	17¼	11	12	12¾	7	438	279	305	319	178	5.51	6	
	34303	23¾	17¼	8	19¾	14	603	438	203	502	354	9.81	6	
	34304	23¾	17¼	12	19	13¼	603	438	305	484	337	14.38	6	

Order in carton quantities.

Double-Sided Cross-Stack Akro-Tub Rack		Inches			mm			Rack Weight/lbs.
Model No.	Description	L	W	H	L	W	H	
RACR5MR	Holds 32 (34301) Cross-Stack Akro-Tubs* or 16 (34303) Cross-Stack Akro-Tubs*	53	29	62	1,245	724	1,499	1000 lbs.

Order in carton quantities. \*Tubs sold separately.

Akro-Tub	Inches					mm					Capacity Gal.	Ctn. Qty.
Model No.	L	W	H	A	B	L	W	H	A	B		
34240	19	24½	9½	20½	15½	483	622	241	521	394	14.6	6

Order in carton quantities.

Akro-Tub Rack	Inches			mm			Casters
Model No.	H	W	D	H	W	D	
RA6TR4MR	73	24	24	1854	609	609	5" x 2" Mold-On Rubber 2 Rigid, 2 Swivel